

PROFEN VISIONIC

Monitor, Control & Management System

Discover the Future of Monitor,
Control and Management
Platforms with **Profen Visionic**

Profen Visionic is your all-in-one system management tool, designed to meet your unique industry needs.

Visionic empowers critical operations with specifically tailored modules for **SATCOM, DCIM, ENERGY** and **SMART FACILITIES**.



A Multi-Domain Technological Phenomenon: VISIONIC's versatility is a derivative of its sophisticated engineering.

SATCOM: Through extensive monitoring capabilities utilizing algorithmic determinants, VISIONIC ensures flawless satellite and broadcast operations, providing an uninterrupted, lossless communication paradigm.

DCIM: VISIONIC applies systematic oversight to Data Centers, ranging from thermodynamic energy management to device interoperability governed by communication protocols.

Energy Management: Real-time analytics and control in VISIONIC are facilitated through stochastic process control and statistical modeling, enhancing energy efficiency.

Smart Factories: Incorporating Industry 4.0 principles, VISIONIC's AI integration utilizes machine learning algorithms for predictive modeling, optimizing factory processes and energy utilization.

Why Choose Profen Visionic?

Real-time Monitoring: Benefit from near-instantaneous data display and alarm notifications, allowing you to be proactive in addressing any issues.

Enhanced Security: Multiple security layers ensuring restricted access based on user rights.

Scalability: Easily adapt the system size to meet evolving needs.

Swift Deployment: Get started in no time with fast and straightforward installation processes.

Optimal Performance: Benefit from advanced features such as high tolerance to network faults and low data transfer bandwidth.

Customization: Tailor your experience with unmatched customization options.

Profen Visionic Key Features

Comprehensive Architecture: Built on Linux with a cutting-edge SOA/microservice architecture. Utilizing Linux's kernel-based operations ensures robust, low-latency performance, high compatibility, and system stability whereas modular design pattern enables scalable, loosely-coupled services, future-proofing technological investments.

Easy to Deploy: Ultra-scalable and available as a commercial-off-the-shelf solution, Visionic supports systems ranging from small setups to highly complex infrastructures on cloud and on premise depending on your needs.

Profen Edge Gateway: Streamline your integration process and fortify your setup, ensuring immediate redundancy and secure your data through our gateway in case of a system or device failover.

Powered by Artificial Intelligence: Achieve unmatched user and operational efficiency, ensure compliance, and fortify security across your distributed network.

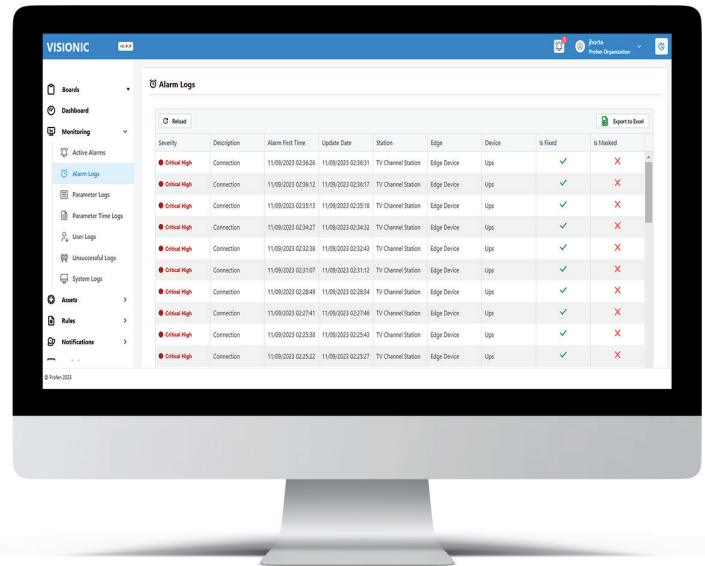
Easy Integration of New Devices: Profen Visionic's vendor-agnostic structure ensures smooth device integration. Import SNMP MIB files effortlessly and add devices supporting SNMP, TCP, HTTP, UDP, and Ping protocols.

Real-time Network & Asset Management: Gain a competitive edge with real-time insights into your system's performance. Receive instant notifications, alarms, and detailed logs.

User-Friendly Web-Based Interface: Seamlessly access and manage your systems from anywhere using your mobile devices.

Alarms and Notifications: Define and prioritize alarms based on users, parameters, and events. Stay in control of your system, anytime and anywhere.

Intensive Logging Capability: Automatically log user, device, and system information. Export logs to your computer for in-depth analysis with a single click.



Asset Management: Activate, maintain, and decommission assets effortlessly. Define any device in Visionic's store. Supports TCP, SNMP, UDP, Ping, and HTTP Protocols.

Fault Management: Log and track network faults, anomalies, and outages. Receive real-time incident notifications and alerts.

Rule Manager: Assign decision-making rules based on device parameters. Schedule tasks for one-time or repeated execution.

Security and Access Control: Implement user authentication and authorization with role-based access control (RBAC). Keep audit logs for security and compliance.

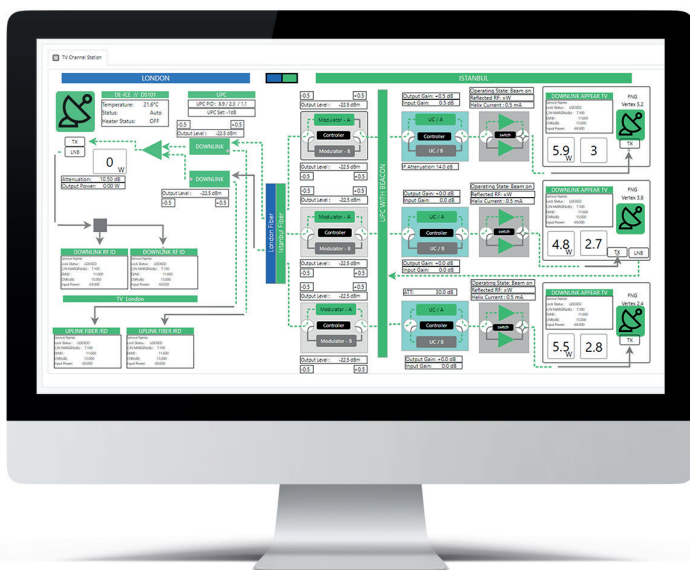
Real-time Monitoring: Continuously monitor satellite link performance, bandwidth utilization, signal quality, latency, and error rates. Get real-time alarms and notifications for anomalies.

Network Topology and Visualization: Explore interactive maps and visual representations of your satellite network infrastructure. Visualize link status, connectivity, and traffic flow in real-time.

Network Automation and Orchestration: Integrate seamlessly with third-party tools and systems using Visionic's API support.

Bandwidth and Capacity Management: Track bandwidth utilization for links, beams, and transponders. Optimize capacity based on historical usage patterns.

Inventory Management: Centrally manage Satellites, Ground Stations, Broadcast Systems, Data Centers, Energy Facilities, and more. Access detailed information, including configuration, location, and status.



To schedule a live demonstration to witness the capabilities of Visionic contact us at marketing@profen.com

+90 (212) 210 27 70

marketing@profen.com www.profен.com

PROFEN