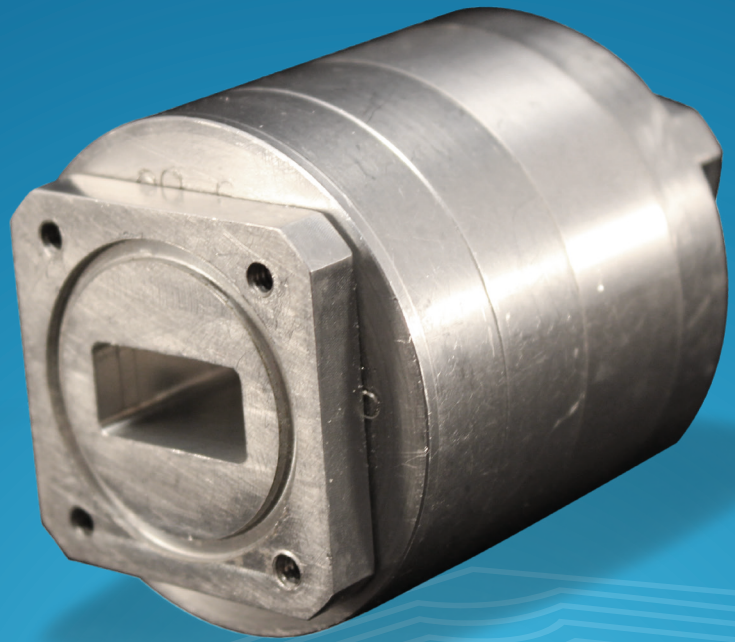


PRJ-WR75

WR-75 ROTARY JOINT

PRJ-WR75 is an I-type rotary joint specially developed for high power applications up to 1000W such as SNG or outside broadcasting etc.

It is an essential part of mobile (drive-away) antennas, where it used in Azimuth and Polarization axis to make it possible rotation under high RF power between HPA and Feed, and Feed to LNB systems.



KEY FEATURES

- * WIDEBAND COVERAGE OF KU-BAND FROM 10.7 TO 14.5 GHZ
- * IMPEDANCE MATCHING BETWEEN COAXIAL WAVEGUIDE AND WR-75
- * ENDLESS 360° ROTATIONAL CAPACITY
- * I-TYPE ROTARY JOINT

PRJ-WR75

WR-75 ROTARY JOINT



ELECTRICAL PROPERTIES

Operation Frequency Range

Input
10.95 GHz – 12.75 GHz

Output
13.75 GHz – 14.50 GHz

Insertion Loss

Input
0.3 dB

Output
0.5 dB

VSWR (Max)

1.5:1

Power Handling (Max)

1000 W (Continuous)

PHYSICAL PROPERTIES

Dimensions

Length
62.7 mm

Diameter
52.0 mm

Weight
330 gr.

Waveguide Standards

WR-75

ENVIRONMENTAL PROPERTIES

Operation Temperature

-30 to 60 oC

Humidity

98 % non-condensing

Storage Temperature and Humidity

-40 / 80 oC , 95 % RH