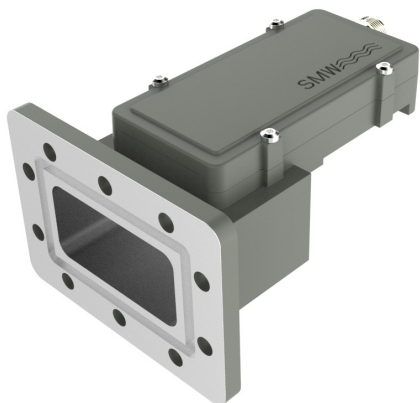


Single band PLL LNB



Professional C-Band LNB with
Internal Interference
mitigating filters



DVBS2X®

Features

- Internal Interference mitigating filters
- Low phase noise to meet DVB-S2X VSAT profile
- High P1dB and IP3
- Choose between Internal Ref. or External Ref. input models
- Compact size and light weight
- Wide operating temperature range
- LNB-Link / Versa-Link for Fiber optic RF link



TECHNICAL SPECIFICATIONS

MODEL:	C-PLL 5.15 S	C-PLL 5.15 E	C-PLL 5.15 B	C-PLL 5.30 C	C-PLL 5.75 W	C-PLL 5.75 U	C-PLL 5.95 U	
Input Frequency	3.625–4.200 GHz	3.400–4.200 GHz	3.700–4.200 GHz	3.800–4.200 GHz	3.600–4.800 GHz	4.500–4.800 GHz	4.500–4.800 GHz	
LO Frequency	5.15 GHz	5.15 GHz	5.15 GHz	5.30 GHz	5.75 GHz	5.75 GHz	5.95 GHz	
Output Frequency	1525 - 950 MHz	1750 - 950 MHz	1450 - 950 MHz	1500 - 1100 MHz	2150 - 950 MHz	1250 - 950 MHz	1450 - 1150 MHz	
Internal RF filters	>40 dB @ <3.2 GHz 15 dB @ 3.4 GHz 15 dB @ 4.4 GHz >40 dB @ >4.5 GHz	>40 dB @ <3.0 GHz 20 dB @ 3.2 GHz 15 dB @ 4.4 GHz >40 dB @ >4.5 GHz	>40dB @ <3.4 GHz 35dB @ 3.5 GHz 15dB @ 4.4 GHz >40dB @ >4.5 GHz	>40dB @ <3.5 GHz 30dB @ 3.65 GHz 15dB @ 4.3 GHz >40dB @ >5.0 GHz		>40 dB @ <3.2 GHz 15 dB @ 3.4 GHz 25 dB @ 5.0 GHz >40 dB @ >5.1 GHz		
Spurious @ RF output	max. -60dBm in band, max. -40 dBm out of band							
Gain	60 dB typ., (55 dB min.)							
Flatness (30 MHz)	±0.4 dB max.							
Flatness (full band)	±2 dB max.			±3 dB max.		±2 dB max.		
Noise Figure / Noise Temperature	0.69 dB / 50 K typ.							
Phase Noise	-62 dBc @ 100 Hz	-80 dBc @ 1 kHz	-88 dBc @ 10 kHz	-95 dBc @ 100 kHz	-120 dBc @ ≥1MHz typ.			
Phase Noise, PLL 5.75 W	-62 dBc @ 100 Hz	-80 dBc @ 1 kHz	-83 dBc @ 10 kHz	-95 dBc @ 100 kHz	-120 dBc @ ≥1MHz typ.			
Image Rejection	40 dB min.							
Output P1dB	+15 dBm typ.							
Output IP3	+25 dBm typ.							
Output VSWR	2.1:1 typ.							
Output Connector	F-type 75Ω / N-type 50Ω Option SMA-type 50Ω							
Input Waveguide	WR 229 / R 40, CPR 229G flange							
Input VSWR	2.3:1 typ.							
LO Leakage	-60 dBm @ waveguide input min.							
MODELS with Internal Reference	±0.5 ppm -20 to +70°C (±1 ppm -40 to +80°C), ±1 ppm -20 to +70°C (±1.5 ppm -40 to +80°C), ± 2.5 ppm -40 to +80°C							
MODELS with External 10 MHz Reference	Sine Wave, Level: -15 to + 5 dBm. Supplied through output connector (with no ext. 10 MHz ref. present LO shifts -20 ppm)							
DC Input	+12 to +18 V, 430 mA typ. Supplied through output connector							
Temperature Range	Storage and operating: -40 to +80°C							
Dimensions	142 x 99 x 70 mm (F- & SMA-connector), 148 x 99 x 70 mm (N-connector), for drawing, see www.smw.se							
Weight	380 g (F- & SMA-connector) 396 g (N-connector)							
Options	Customized LO, gain & variation, Separate DC input connector F- N- or SMA-type, Separate 10 MHz ref. input.							
Miscellaneous	Enclosed O-ring, mounting screws M6 x 25, washers and nuts 10 pcs.							

See the RF over Fiber and L-Band sections for output options

Rev.11-20-4G

Above parameters are generic product family values. For part number specific min./max. values, please consult us.
Specifications are subject to change without notice. Products from Swedish Microwave AB are made for commercial use.